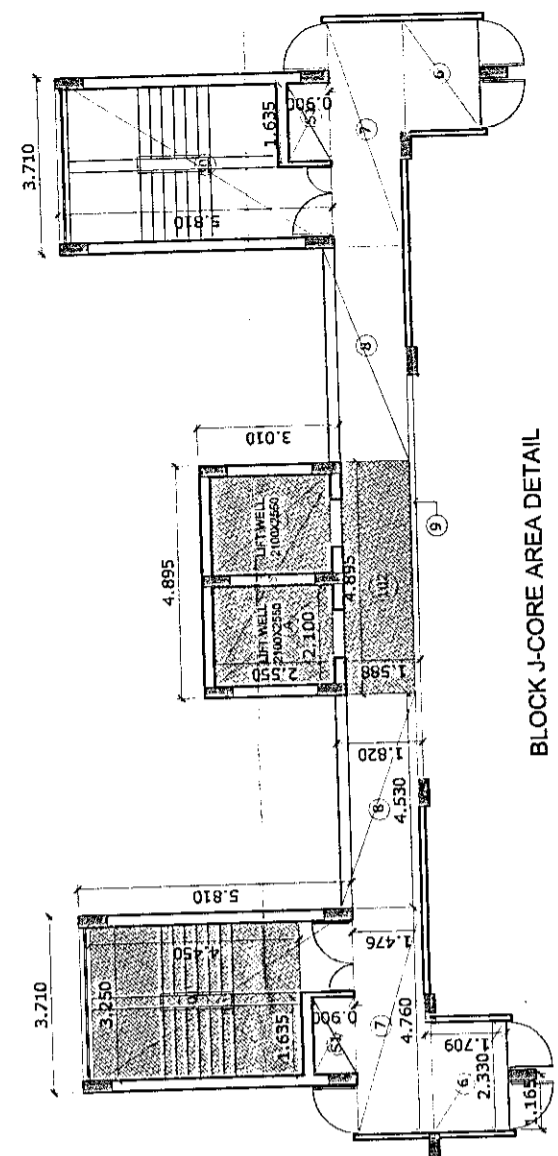
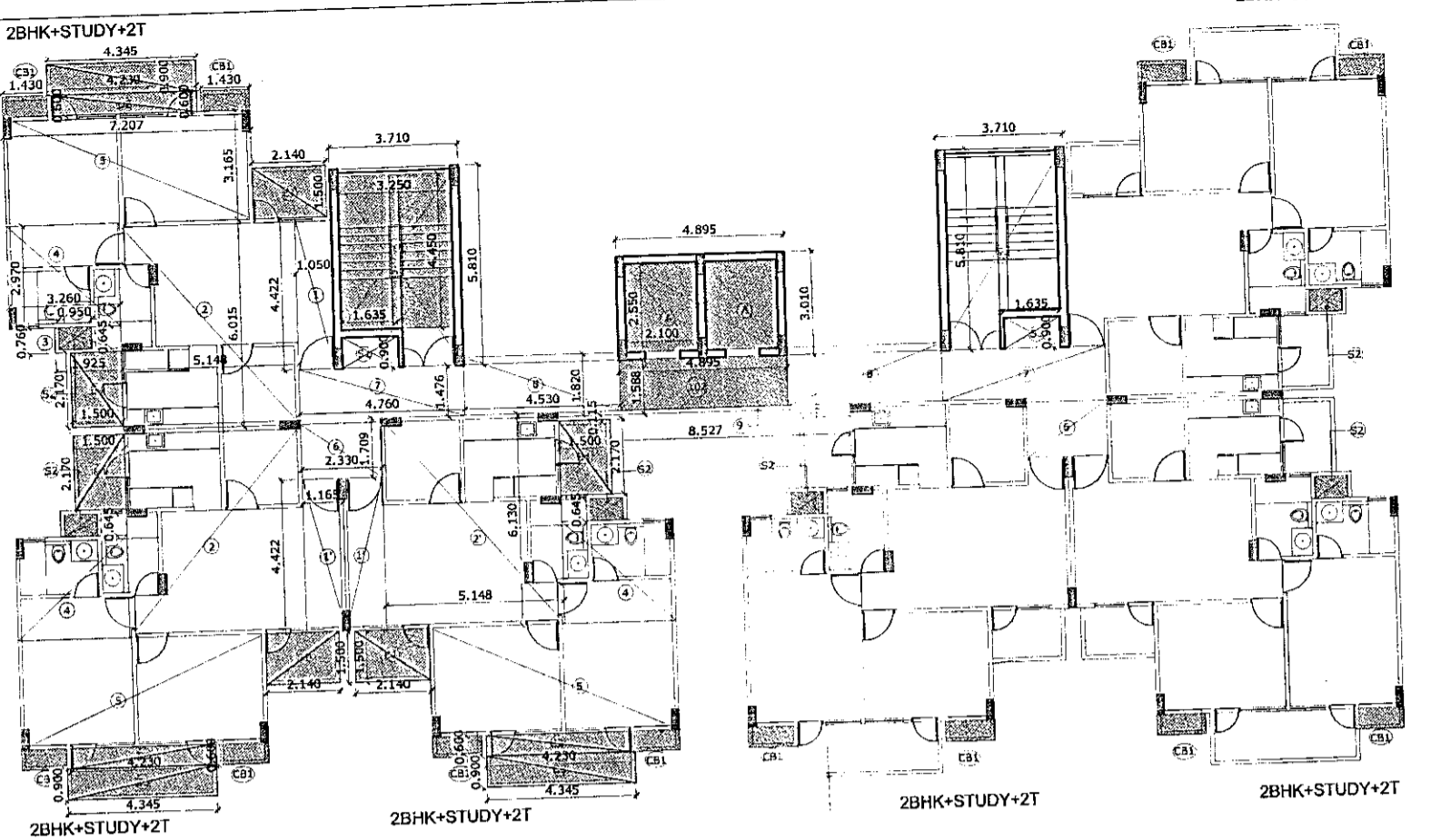
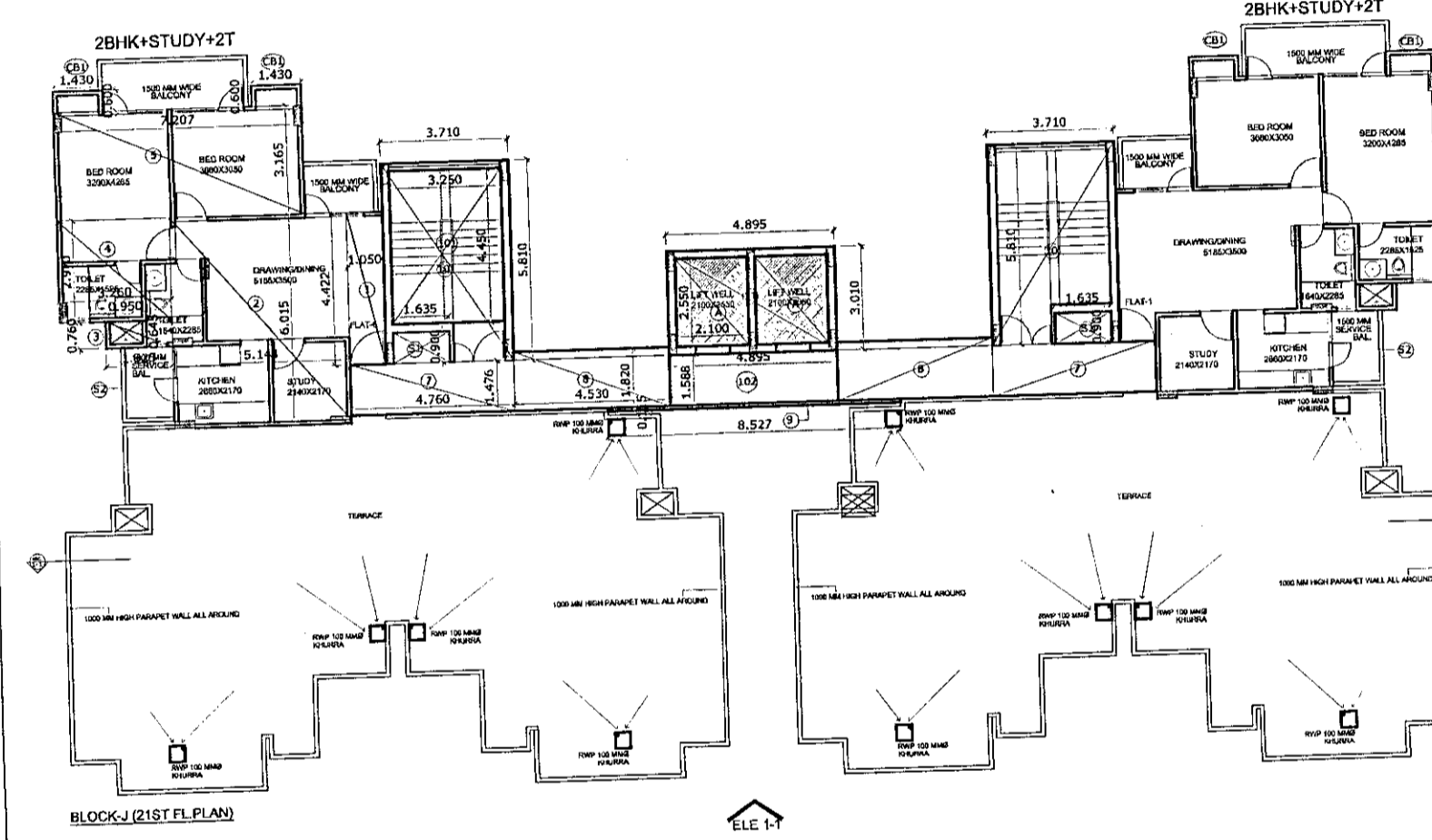


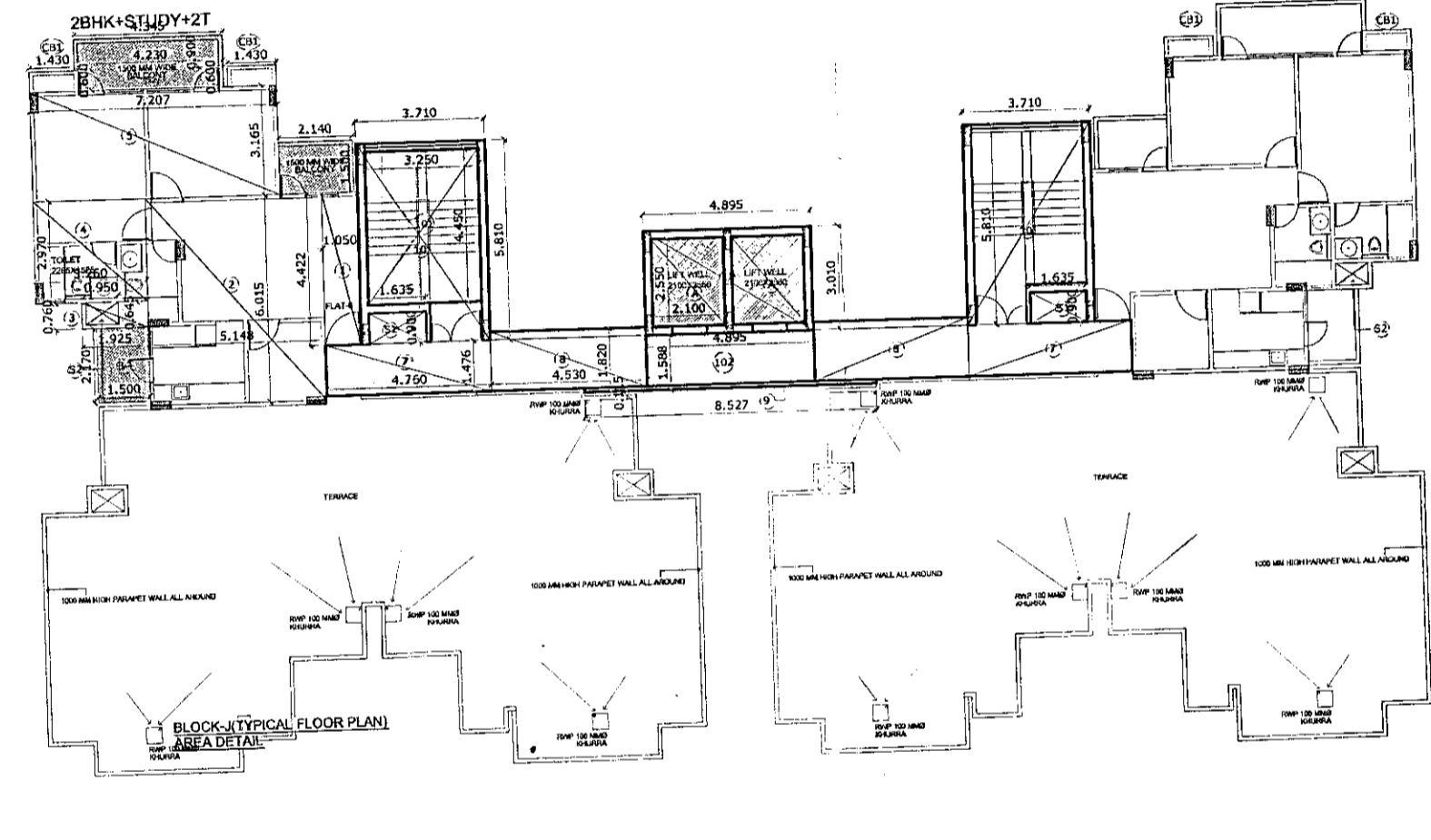
BLOCK-J(TYPICAL FLOOR PLAN)



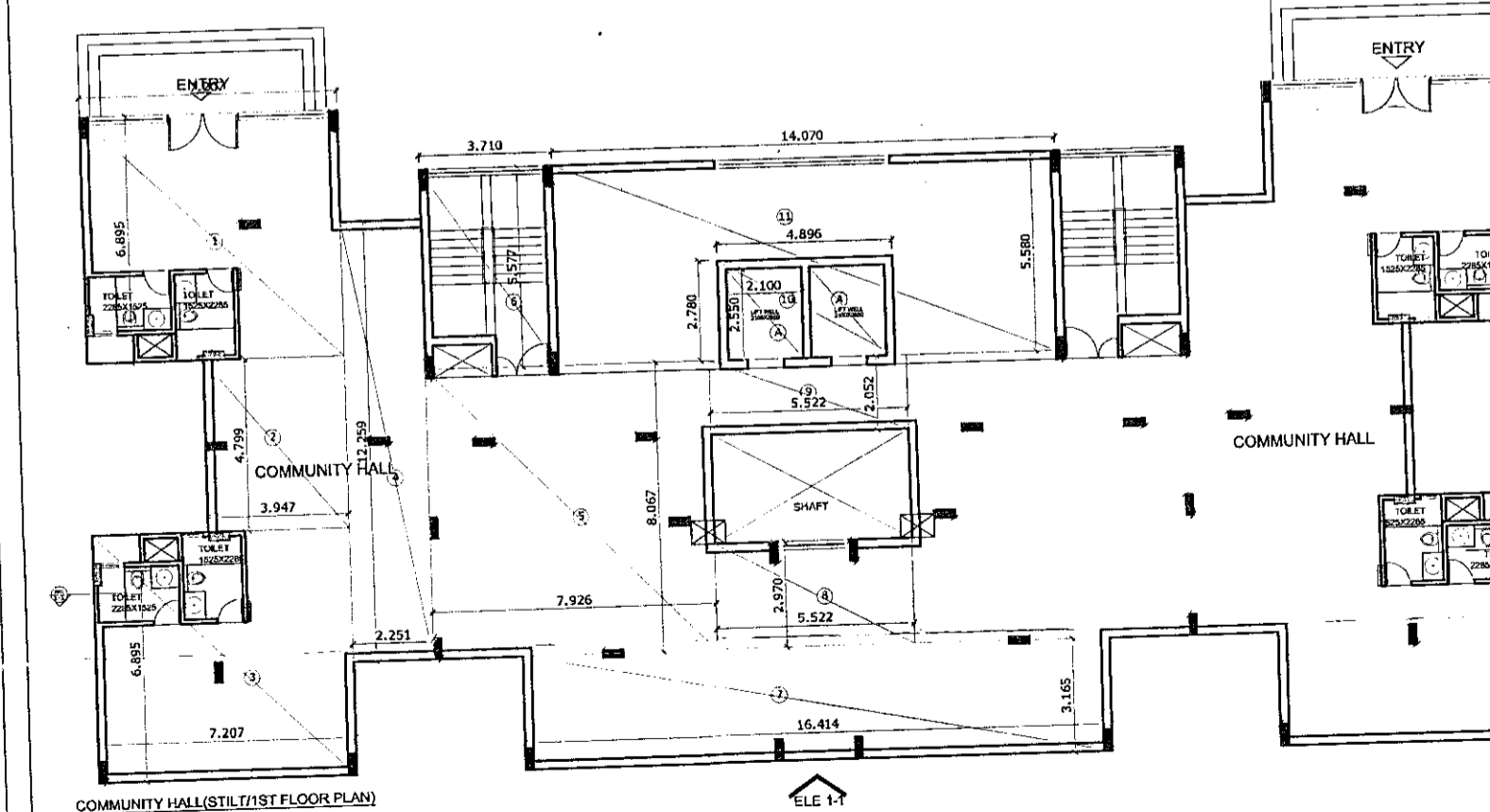
BLOCK J-CORE AREA DETAIL



BLOCK-J (21ST FL. PLAN)



2BHK+STUDY		S No.	LENGTH	WIDTH	AREA	AREA
		1	1.050	4.422	1	4.643
		2	5.148	6.015	1	30.965
		3	1.925	0.760	1	1.463
		4	3.260	2.970	1	9.682
		5	7.207	3.165	1	22.810
						69.564 SQM
		CB1	1.43	0.6	1	0.858 SQM
2BHK+STUDY		S No.	LENGTH	WIDTH	AREA	AREA
		1	1.165	4.422	1	5.152
		2	5.148	6.015	1	30.965
		3	1.925	0.760	1	1.463
		4	3.260	2.970	1	9.682
		5	7.207	3.165	1	22.810
						70.072 SQM
		CB1	1.43	0.6	1	0.858 SQM
2BHK+STUDY		S No.	LENGTH	WIDTH	AREA	AREA
		1	1.165	4.422	1	5.152
		2	5.148	6.130	1	31.557
		3	1.925	0.760	1	1.463
		4	3.260	2.970	1	9.682
		5	7.207	3.165	1	22.810
						70.664 SQM
		CB1	1.43	0.6	1	0.858 SQM



COMMUNITY HALL (STILT) 1ST FLOOR PLAN

TOWER-J	2BHK+2T	2BHK+2T	2BHK+2T	2BHK+2T	2BHK+2T	2BHK+2T	TOTAL BAL. AREA	CURBOARD AREA (ANCILLARY AREA)	TOTAL UNIT AREA	CIRCULATION CORE AREA	FIRE STAIR (ANCILLARY AREA)	CLUB AREA	MR. MUMTY (ANCILLARY AREA)	ELE, LV & FIRE SHAFT (ANCILLARY AREA)	ACTUAL LOBBY AREA	UFT SHAFT AREA (ANCILLARY AREA)	TOTAL COMMON AREA
STILT																	
1ST FL.	69.564	69.564	70.072	70.072	70.664	70.664	77.481	10.296	508.377	65.518	14.463	630.004		6.620	7.773	10.710	610.004
2ND FL.	69.564	69.564	70.072	70.072	70.664	70.664	77.481	10.296	508.377	65.518	14.463	608.584		6.620	7.773	10.710	608.584
3rd FL.	69.564	69.564	70.072	70.072	70.664	70.664	77.481	10.296	508.377	65.518	14.463			6.620	7.773	10.710	115.380
4th FL.	69.564	69.564	70.072	70.072	70.664	70.664	77.481	10.296	508.377	65.518	14.463			6.620	7.773	10.710	115.380
5th FL.	69.564	69.564	70.072	70.072	70.664	70.664	77.481	10.296	508.377	65.518	14.463			6.620	7.773	10.710	115.380
6th FL.	69.564	69.564	70.072	70.072	70.664	70.664	77.481	10.296	508.377	65.518	14.463			6.620	7.773	10.710	115.380
7th FL.	69.564	69.564	70.072	70.072	70.664	70.664	77.481	10.296	508.377	65.518	14.463			6.620	7.773	10.710	115.380
8th FL.	69.564	69.564	70.072	70.072	70.664	70.664	77.481	10.296	508.377	65.518	14.463			6.620	7.773	10.710	115.380
9th FL.	69.564	69.564	70.072	70.072	70.664	70.664	77.481	10.296	508.377	65.518	14.463			6.620	7.773	10.710	115.380
10th FL.	69.564	69.564	70.072	70.072	70.664	70.664	77.481	10.296	508.377	65.518	14.463			6.620	7.773	10.710	115.380
11th FL.	69.564	69.564	70.072	70.072	70.664	70.664	77.481	10.296	508.377	65.518	14.463			6.620	7.773	10.710	115.380
12th FL.	69.564	69.564	70.072	70.072	70.664	70.664	77.481	10.296	508.377	65.518	14.463			6.620	7.773	10.710	115.380
13th FL.	69.564	69.564	70.072	70.072	70.664	70.664	77.481	10.296	508.377	65.518	14.463			6.620	7.773	10.710	115.380
14th FL.	69.564	69.564	70.072	70.072	70.664	70.664	77.481	10.296	508.377	65.518	14.463			6.620	7.773	10.710	115.380
15th FL.	69.564	69.564	70.072	70.072	70.664	70.664	77.481	10.296	508.377	65.518	14.463			6.620	7.773	10.710	115.380
16th FL.	69.564	69.564	70.072	70.072	70.664	70.664	77.481	10.296	508.377	65.518	14.463			6.620	7.773	10.710	115.380
17th FL.	69.564	69.564	70.072	70.072	70.664	70.664	77.481	10.296	508.377	65.518	14.463			6.620	7.773	10.710	115.380
18th FL.	69.564	69.564	70.072	70.072	70.664	70.664	77.481	10.296	508.377	65.518	14.463			6.620	7.773	10.710	115.380
19th FL.	69.564	69.564	70.072	70.072	70.664	70.664	77.481	10.296	508.377	65.518	14.463			6.620	7.773	10.710	115.380
20th FL.	69.564	69.564	70.072	70.072	70.664	70.664	77.481	10.296	508.377	65.518	14.463			6.620	7.773	10.710	115.380
21st FL.	69.564	69.564	70.072	70.072	70.664	70.664	77.481	10.296	508.377	65.518	14.463			6.620	7.773	10.710	115.380
MUMTY/MAC HINE ROOM							12.914	1.716	153.757				109.300	1.103	7.773		109.300
TOTAL	1391.274	1391.274	1331.372	1331.372	1342.620	1342.620	1485.053	197.340	9812.924	1244.849	274.788	1238.588	109.300	126.874	155.463	214.200	1237.198

APARTMENT ACT
PROJECT:
GROUP HOUSING (GC-2 AT GAUR CITY) PLOT NO - GH - 01, SECTOR - 4, GREATER NOIDA
CLIENT:
AIG INFRA TECH INDIA PVT. LTD.
SHEET TITLE:
BLOCK - J AREA DETAIL
DATE: 23.5.14 DRG NO: A-8
SCALE: 1:100 NORTH:
OWNER'S SIGN: ARCHITECT'S SIGN:
AIG INFRA TECH INDIA PVT. LTD. CHANDER MOHAN
ARCHITECTS:
SPACE DESIGN GROUP
W-139, F.F. GREATER KAILASH-I, NEW DELHI-48
PH: 011-26240752, 41631255
EMAIL: spacedesigngroup@rediffmail.com / gmail.com